

Packing Guide for Asbestos Containing Materials (ACM's) for Export



PACKING AND LABELLING OF ASBESTOS CONTAINING MATERIAL

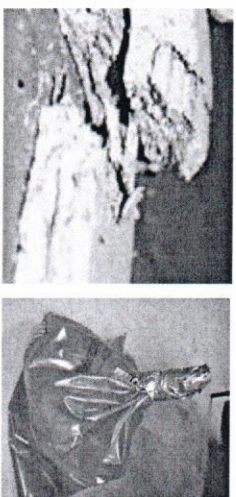
— GENERAL REQUIREMENTS

Small sized sections of asbestos must first be placed into UN-approved red bags which display the appropriate asbestos warning label and then goose necked sealed with tape. DO NOT break sections of ACM to make them fit the bag.

- The red bag should then be wiped clean before being carefully placed into a suitable approved clear asbestos bag which should then also be goose necked sealed with tape.
- The waste bags must be appropriately labelled to identify that they contain asbestos waste.

Bulky, large or sharp edged sections of asbestos (including pipes) must be double wrapped in two layers of 1,000 gauge polythene and securely sealed with good quality tape (preferably 75mm duct tape).

- A printed label (with the same information as the bag) must be securely attached to the packaging to indicate that it contains asbestos waste.



Failure to comply with these guidelines may result in the shipment being rejected or quarantined

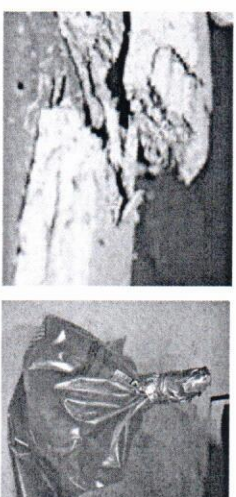
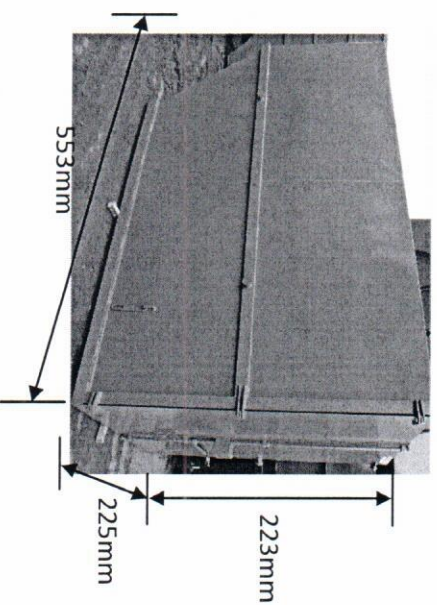
PACKING AND LABELLING OF ASBESTOS CONTAINING MATERIAL

— SKIP FILLING ON SITE

It may be more appropriate to place packaged asbestos directly into lockable skips which are located at the customer's site.

The material, once correctly packaged is placed directly into the skip. The skip itself is fully lockable to prevent unauthorised access.

This has the benefit of preventing double handling of the material and reducing transport requirements.



Failure to comply with these guidelines may result in the shipment being rejected or quarantined

3 of 8

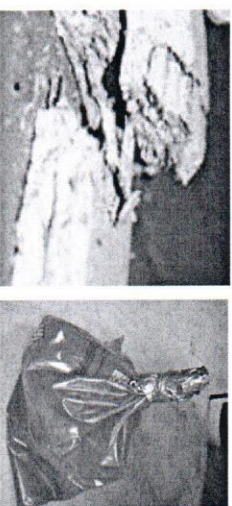


PACKING AND LABELLING OF ASBESTOS CONTAINING MATERIAL

— TRANSPORT TO THE RILTA ENVIRONMENTAL SITE

Packaging in Red and White UN-approved Asbestos Packaging

Where the placement of an on-site skip is not appropriate, Rilita have the capability of accepting such packaged waste at its facility.



Conditions of Acceptance

- All ACM's must be packed according to the standards outlined in this document. These standards are in line with the requirements of the Health and Safety Authority.
- CLEARLY MARK each package with '01' or '05' to indicate the corresponding EWC code.
- Once the material has been double bagged (i.e. red and white UN-approved packaging), it must then be placed in UN-approved FIBC bags. This is to enable safe transport.
- These UN-approved FIBC bags must then be goose necked sealed with tape.
- FIBC bags must not be overfilled and weight restrictions of the packaging will apply.
- There must be no debris on the outer packaging.



Failure to comply with these guidelines may result in the shipment being rejected or quarantined

PACKING AND LABELLING OF ASBESTOS CONTAINING MATERIAL

Packaging in 1,000 Gauge Polythene

Where the placement of an on-site skip is not appropriate, Rilta have the capability of accepting such packaged waste at its facility.

Bulky, large or sharp edged sections of asbestos must be double wrapped in two layers of 1,000 gauge polythene and securely sealed with good quality tape (preferably 75mm duct tape).

Conditions of Acceptance

- All packaged sheets longer than 2m must be supported by two pallets underneath (euro pallet 1200mm x 800mm).
- Similar shaped ACM's must be packed together. It is not acceptable to pack flat and corrugated sheeting in the same packaged bale.
- Weight restriction of 1tonne applies per bale (25sheets).
- Downpipes, gutters etc. must be placed in FIBCs or baled separately (if oversized) and not mixed with sheeting.
- All pipes must be individually wrapped and banded in a single layer and not pyramid stacked.
- All pallets of sheeting must be level on top for stacking purposes.
- There must be no debris on the outer packaging.

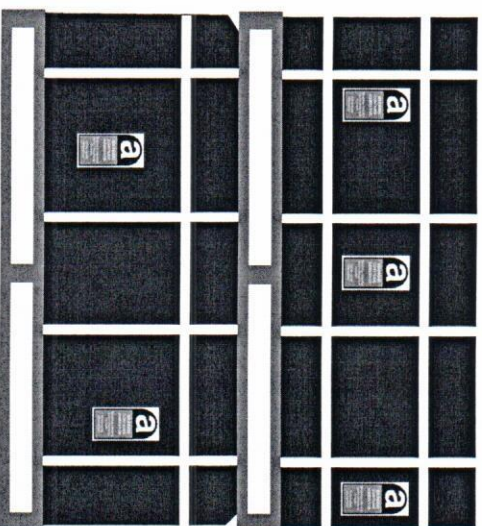


Failure to comply with these guidelines may result in the shipment being rejected or quarantined

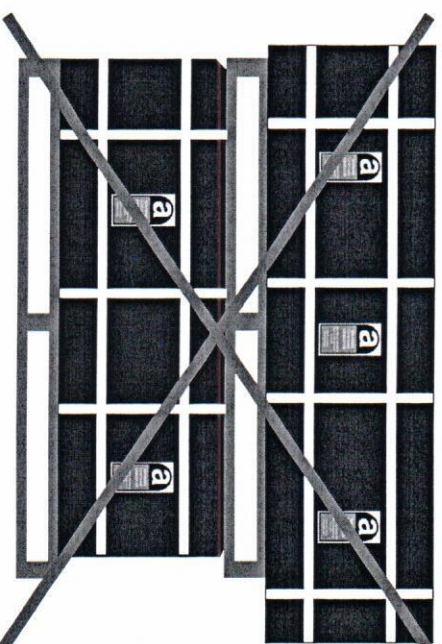
5 of 8



PACKING AND LABELLING OF ASBESTOS CONTAINING MATERIAL



When stacking pallets, ensure that the packaged material on the pallet does not overhang any part of the pallet.



Overhanging packaged material creates an unstable load and could lead to damaged packaging (resulting in possible fibre release).

Failure to comply with these guidelines may result in the shipment being rejected or quarantined

6 of 8

PACKING AND LABELLING OF ASBESTOS CONTAINING MATERIAL

Contaminated Soil

Where the placement of an on-site skip is not appropriate, Rilta have the capability of accepting such packaged waste at its facility.

Conditions of Acceptance

- All soil containing ACMs must be placed in FIBC bags. The bags must be sift proof and water resistant or have a sift proof and a water resistant liner.
- The FIBCs must be goose necked (liner also), tied and taped.
- FIBCs must conform to UN standard 13H3/Z
- All packages shall be labelled with the 'asbestos A' warning labels.
- All bags must be weighed to ensure that the contents do not exceed the permissible weight.
- FIBCs shall be kept clean and free from any debris.



Failure to comply with these guidelines may result in the shipment being rejected or quarantined

7 of 8

